

The Upper Midwest Australian Shepherd Club Presents:

THE EIGHTH ANNUAL CATTAIL CLASSIC

July 25 – 26, 2009

Four Australian Shepherd Conformation Shows

One All-Breed Obedience Trial

Two All-Breed Stock Trials

All Outdoors

Hugo, MN

ASCA Sanctioning Pending

UMASC is also holding an All-Breed Stockdog and Farm Trial on Friday, July 25 in Pine City, MN. See flyer following conformation/obedience information below, or go to <http://uppermidwestasc.com/events.html>

Saturday, July 25

All-Breed Obedience Trial

9:00 AM

Judge: Karen Anderson

Utility B, Utility A, Open B, Open A, Novice B, Novice A, Grad Nov, Pre-Nov

Day-of entries taken 8:00 AM to 8:30 AM

Best Puppy, Best Veteran, Altered Best of Breed and Regular Best of Breed compete in Best of Show at each show

Saturday, July 25

Australian Shepherd Conformation Show #1

10:00 AM

ASCA Breeder Judge: Jeanne Heger

Altered, Puppies, Juniors, Veteran, Regular Conformation, Best of Show

Day-of entries taken 9:00 AM to 9:30 AM

Australian Shepherd Conformation Show #2

[One half hour after show #1 but not before Noon]

ASCA Breeder Judge: Lori Acierto

Altered, Puppies, Juniors, Veteran, Regular Conformation, Best of Show

Day-of entries taken 9:00 am to 11:30 AM

Sunday July 26
Australian Shepherd Conformation Show #3
10:00 AM

ASCA Breeder Judge: David Clayton
 Altered, Puppies, Juniors, Veteran, Regular Conformation, Best of Show
 Day-of entries taken 9:00 AM to 9:30 AM

Australian Shepherd Conformation Show #4
[One half hour after show #3 but not before Noon]

Judge: Nancy Eilks
 Altered, Puppies, Juniors, Veteran, Regular Conformation, Best of Show
 Day-of entries taken 9:30 am to 11:30 AM



ASCA Sanctioned Entry Information

Regular Conformation Classes	Non-Regular Puppy Classes	Junior Handling Classes	Conformation/Stock Class Entry Fees	Pre-Entry/Gate Entry
<i>Divided by Sex</i> 6 – 9 month 9 – 12 month 12 – 18 month Novice American Bred Bred by Exhibitor Open Blue Merle Open Red Merle Open Black Open Red Winners Best of Breed	<i>Divided by Sex</i> 2 – 4 months 4 – 6 months Best Puppy Add'l Non-Reg Classes <i>Veteran Dog 7-10</i> <i>Veteran Bitch 7-10</i> <i>Veteran Dog 11+</i> <i>Veteran Bitch 11+</i> <i>Best Veteran</i>	Pee Wee 0 – 5 yrs Sub Junior 6 – 7 yrs Novice Junior 8 – 12 Novice Senior 12- 17 Open Junior 8 – 12 Open Senior 13 – 17 Best Junior Handler Reserve Jr Handler	Regular and Altered Non-Regular Junior Handling Pee Wee Handling Sheep Ducks Junior Stock Entries Pre-Entry Show Specials! See next page...	\$12.00 \$15.00 8.00 10.00 3.00 5.00 1.00 1.00 22.00 24.00 16.00 18.00 8.00 10.00

Regular Obedience Classes	Non-Regular Obedience Classes	Obedience Special Awards	Obedience Class Entry Fees	Pre-Entry/Gate Entry
Utility A Utility B Open A Open B Novice A Novice B	Pre-Novice Grad. Novice	High in Trial Aussie High in Trial Other Breed High Scoring Junior High Combined	Regular Obedience Non-Regular Obed 2 nd Entry of same dog in any class	\$12.00 \$15.00 8.00 10.00 5.00 8.00

⇒ **Show Specials: *PRE-ENTRY ONLY*** ⇐
(Entries must be received by July 22)

ALL FOUR SHOWS for:

Regular Entries	\$40.00
Non-Regular Entries	\$25.00
Juniors Entries	\$10.00

All dogs 6 months of age or over at the show site must have a current rabies vaccine certificate in their owners' possession.

All Australian Shepherds six months of age and older must be able to show proof of ASCA registration to be eligible for showing

You may download ASCA entry forms by going to the ASCA website at <http://asca.org>. Click on **Forms and Rule Books** and look for **Conformation/Obedience Entry** and **Stock Dog Trial Entry** forms



Mail to:



**Kathy Sianko
13623 W. Freeway Dr
Hugo, MN 55038**

Questions?

Contact Kathy at silvermoonaussies@msn.com or 651-464-6058

Directions:

From the south: take 35E north to Hugo/Centerville exit (#123). Go left/west and cross over the bridge. About a ¼ mile down, you come to a 4-way stop. Take a right at the stop sign over the bridge (west). About 1/4 mile down you come to a 4-way stop. Take a right at the stop sign (Anoka Cty 52) and go north 3.8 miles. You will come to an overpass. Our house is the first house on the right after the overpass.

From 35W: go north to Hwy 97 Exit. Go left off the ramp and cross over the freeway. Take an immediate left on the frontage road (West Freeway Drive), go South 2.5 miles. The house is on the left, white house with black trim. Box #13623.

THANKS FOR CLEANING UP AFTER YOUR DOGS

**The show is outdoors, rain or shine
Food and beverages will be available for sale.**

Note: There is no parking on the road. Drive in and find a spot to the immediate left or right of the driveway on the property.



UPPER MIDWEST AUSTRALIAN SHEPHERD CLUB
All Breed Stockdog Trial 7 AM
SHEEP and DUCKS
ASCA Sanctioned/ASCA Rules
Course A
ASCA Sanctioning pending

Saturday, July 25, 2009
Judge: Marie Murphy
20 Sheep runs
20 Duck runs

Sunday July 26, 2009
Judge: Roy Sage
20 Sheep runs
20 Duck runs

Check in and handlers meeting 6:45 AM
Trial starts 7 AM both days.

	Pre-entry	Gate Entry
Sheep	\$22.00	\$24.00
Ducks	\$16.00	\$18.00
Jr. Stock Entries	\$ 8.00	\$10.00

Awards: High in Trial, High Scoring Aussies, High Sheep, High Ducks, High Combined, most Promising Started Aussie, High Working Junior, High Junior Handler.

Order of run will be determined by date entry is received. Bitches in season will run last. Substitutions allowed. No refunds unless slot is filled by another dog.

All trial entries must be pre-entered. A waiting list will be made in order of receipt if trial fills. Gate entries will be accepted from 6:30 until 7 AM day of trial. Entries are open now!!!

SEND STOCK ENTRIES TO:

Course Director: Kim Schneider
23322 Russell Road
Pine City, MN 55063
320-629-1068
Hzlbt@aol.com

Entries must be received (not postmarked) by July 22, 2008

You may download an ASCA entry form by visiting the ASCA website at www.ASCA.org.

Note: other herding breed stockdog competitors, you now must have an ASCA Tracking number to run your dogs. You may get information about obtaining that number from the ASCA Website.

UPPER MIDWEST AUSTRALIAN SHEPHERD CLUB

"Not so Lazy Dog Day Afternoon - Stock Trial"
Friday, July 24, 2009

ALL BREED ASCA STOCKDOG AND FARM TRIAL

ASCA RULES

ASCA Sanction Pending

Please note the Cattail Classic will be held on July 25-26, 2009 at Kathy Sianko's home.
Conformation and Herding will be offered. Please contact Kathy for more info.

Friday July 24, 2009

Judge: Roy Sage

Sheep and Duck Farm Trial (see following pages for course and description)

(6 sheep and 6 duck runs available)

Cattle Trial Course B (9 runs available)

Check-In/Day of Show Entries: 6:45 a.m.

Handler's Meeting Cattle: 7:00 a.m.

Cattle Trial starts : 7:15 a.m.

Handler's meeting for Sheep Farm Trial will begin after completion of Cattle trial with trial starting immediately after the Handler's Meeting. Duck Farm Trial Handler's meeting and running of the course will start immediately after the Sheep are done.

Awards will be given out for all runs after completion of all runs.

All pre-entries must be postmarked on or after June 19, 2009 through July 22, 2009.

No pre-entries will be accepted with a postmark before June 19!

Sorry, no phone or email entries!

Please state clearly on entry form which dates and what classes you are entering.

All non-aussie entrants must be registered with a tracking number from ASCA to receive titles. See ASCA website for details. You may also register for a tracking number at the trial. www.asca.org

Entries will be accepted in postmark order. In the case of duplicate postmark entries a random draw will be made of those entries to determine the order of acceptance. Run order will be drawn on July 22nd. **Correct entry fee must accompany an official, signed, and FULLY completed ASCA entry to be considered a valid entry.** Forms are available on the ASCA website. www.asca.org Day of show entries will be allowed if space is available. A waiting list will be established if the trial fills. **Entry fees will only be refunded if the trial AND your spot is filled.** Bitches in heat will run in the order of the draw.

Make checks payable to: **UMASC**

Send entries to: Kim Schneider

23322 Russell Road Pine City, MN 55063

Course Director: Kim Schneider

Phone: H: 320-629-1068

cell: 651-332-6778

email: hzbtt@aol.com

Show Secretary: Kathy Sianko

Please include your email address on the entry form and we will confirm that your entry was accepted or if you are on the waiting list. If you do not have email, please enclose a self-addressed stamped postcard.

Entrants are responsible for all damage caused by themselves, their dogs, and their family members. UMASC/& members/& the Schneider family assume no responsibility for any accident, injury, loss or theft. Please stay in the designated areas. Please clean up after your dogs. **DO NOT POTTY OR EXERCISE DOGS ON ANY ONE ELSE'S PROPERTY OTHER THAN THE HOST SITE.** All dogs must be **ON LEASH** at all times. Failure to comply with the above will result in the entrant being asked to leave and no refunds to be given.

Directions:

Elysian Farm
Joe and Kim Schneider
23322 Russell Road
Pine City, MN 55063
H: 320-629-1068 C: 651-332-6778
hzbtt@aol.com

From I35 North: Take 35 North to Exit 165/County Road 70 (Rock Creek Exit). Head east (right) till you reach the 4 way stop. At the stop take 361 North (left). Follow 361N to County Road 117 /Liberty Road (1.3 mi). Head east (right) on 117/Liberty Road. Follow the road until it stops (2 mi). Head north (left) on County Road 4/Military Road/Government Road. This is a paved road. From County Road 4 head north until you reach Russell Road (.6 mi). Head east (right) on Russell Road. Elysian Farm will be the 3rd house on your right (.6 mi). Our driveway is not paved. Please use caution when driving or parking if it is wet out.
Veterinarian on Call: Pine City Veterinary Clinic:320-629-7591

Volunteers are needed to help the trials run smoothly. Timers, scorekeepers, stock handlers, runners, are always needed and APPRECIATED! If you would like the trials to continue please help wherever you can when you are not running a dog. Thank you!!!!!!!!!!!!!!

Pre-Entry Fees:	Day of Entry Fees:
Cattle: \$40.00	\$50.00
Sheep Farm: \$45.00	\$50.00
Duck Farm: \$35.00	\$40.00
Open Working Junior: Same as above	

Specials available Pre-Entry Only!
Entry for same dog all three events: \$105.00

Awards:

High Cattle
High Sheep Farm Trial
High Duck Farm Trial
High Combined: Highest combination from all qualifying scores in cattle, sheep and ducks.

ASCA Duck Farm Trial Course Description

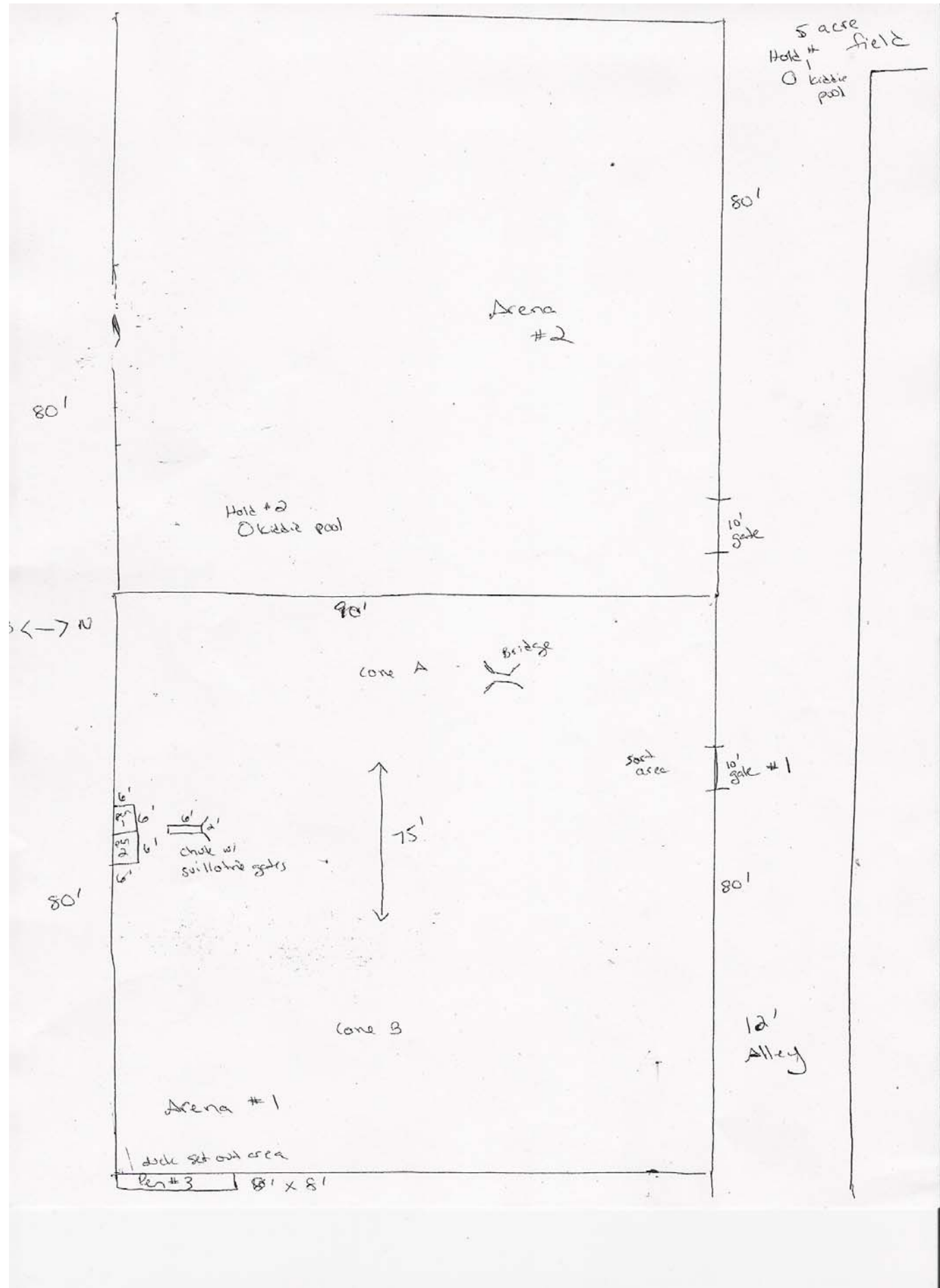
- Handler and Dog will be waiting at Cone A
- 10 Head of ducks will be set into Arena #1 near marked set out area
 - Open Handlers may walk to Cone B and send their dog to gather ducks to them (25 available points)

- Advanced Handlers must stay at Cone A and send their dog to gather ducks to them (25 available points)
- After ducks have been gathered to handler the stock will be taken across the bridge with the stock entering the south entrance and exiting the north entrance (15 available points)
- Sort 5 head of ducks in sort area and take out of gate #1. Leave remaining 5 in Arena #1. (25 available points)
- Advanced handlers will take their 5 sorted ducks and proceed to Hold area #1 and place ducks in or near kiddie pool for 15 seconds or until judge calls "That's a hold". (15 available points)
- Open Handlers will take their 5 sorted ducks and proceed to Hold area #2 located in Arena #2 and place ducks in or near kiddie pool for 15 seconds or until judge calls "That's a hold". (15 available points)
- All Handlers/dogs will return ducks to Arena #1 and will put 10 head of ducks through chute. It has guillotine gates (25 available points).
- Handlers/dogs will put 5 head of ducks into Pen #1 and 5 head of ducks into Pen #2 after they are put through the chute. They will then take all ducks out of Pen #1 and Pen #2 and put them into Pen #3 (25 available points).

End of Trial!

Time limit is 15 minutes with a 3 min. warning called. Please note, all gates must be closed before time is up.

To earn a qualifying score Open and Advanced Farm Trial dogs must earn 70% or more of the total points (91/130). Any ties will be broken by the highest score under the Pen work section. A dog must have two qualifying Duck Open Farm Trial scores under two different judges to enter the Advanced Duck trial class.



ASCA Sheep Farm Trial Course Description

- Handler and Dog will be waiting at Post A
- 8 head of stock will be set into Arena 1
- Open Handlers may walk to Post B and send their dog to gather sheep to them (25 available points)
- Advanced Handlers must stay at Post A and send their dog to gather sheep to them (25 available points)
- After sheep have been gathered to the handler, the dog and handler will take stock to the 12 foot entrance of the chute (the one with Guillotine gates). Handler will mark 3 head of sheep and then push all sheep through the chute exiting the 18" exit. (25 available points)
- Put all stock through the foot bath (must enter through 7' entrance and exit 18" exit). (15 available points)
- Open Handlers and Dog will take stock out of the chute and hold all stock at the marked "drying area" for 15 seconds or until the judge calls "That's a Hold" (15 available points)
- Advanced handlers and Dog will take stock out of the chute, take them out of the main gate and into the 5 acre field. They will fetch or drive sheep to Cone C and hold all stock there for 15 seconds or until judge calls "That's a Hold". (15 available points)
- Once advanced and open handlers have held their stock they will then put the 8 head of stock into 12' x12' pen #2.
- Sort 3 marked head of stock into pen #5.
- Sort 3 head into pen #4
- Sort 2 head into pen #3
- Move stock from pen #'s 3,4, and 5 and place into pen #2. (25 available points for the above pen work)

End of Trial!

Time Limit is 15 minutes with a 3 minute warning called. Please note, all gates and guillotine style gates must be closed before time is up

To earn a qualifying score Open and Advanced Farm Trial Dogs must earn 70% or more of the total points (91/130). Any ties will be broken by the highest score under the Pen Work section. A dog must have two qualifying sheep Open Farm Trial Dog scores under two different judges to enter in the Advanced Farm Trial Dog class.

Please see diagram of course on next page. There will be ample opportunity to check gates and pens during the handler's meeting.

